

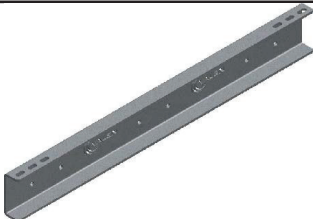
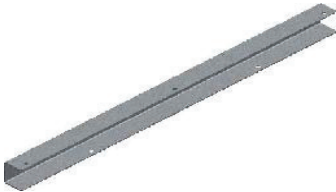





VALEN SB60103 COMPONENTS LIST

1 x Large Pole clamp	
2 x V-bolt 80-150mm OD 4 x M10 nut 4 x M10 washers *37 - 80 OD Vbolts are available as an extra	
2 x Channel (Arm members) 720mm Long	
2 x Cross Arm Channels 900mm Long	
4 x M8 x 20mm Socket Head Cap Screw 4 x M8 x 30mm Socket Head Cap Screw	
14 x M8 Nyloc Nuts 8 x M8 Round Washer	
6 x Solar panel 35mm clamps	
4 x 50mm Gal Washer	

- Spanner 17mm
- Spanner 13mm
- Allen Key 6mm

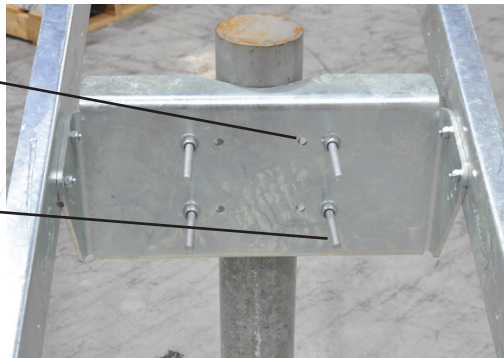
INSTALLATION STEPS

*80 - 150 OD pole to be installed prior. Fixing to larger poles is possible, however you will need to purchase the 37 - 80 OD V bolts as extra.

1. Place pole clamp with the side wings coming out from the pole
2. Locate the V bolt clamp on the pole and into the holes on the pole clamp
3. Place M10 washers followed by nut and screw to nearly tight using 17mm spanner (not included)

These holes on the pole clamp are used when using the 37-80 V-bolt.

These holes on the pole clamp are used when using the 80-150 V-bolt.



4. Slide clamp up the pole to desired finished location and tighten nuts (Torque 21Nm (DRY). Ideally solar panels need to face north.
5. Locate 1x arm member on the side of pole clamp; use top holes for side mount and middle holes for top mount. Insert M8 Socket head cap screw into the desired angle (15°, 30°, 45°, 60°) and thread washer followed by nut from other side then tighten with Allen key (not included).
6. Repeat step 5 for the other side member. Now you should have the pole clamp fixed securely, and both arm members fixed to the clamp at the same angle.



Top mount
= use middle holes on
arm members.



Side mount
= use end holes on
arm members.

- Spanner 17mm
- Spanner 13mm
- Allen Key 6mm

INSTALLATION STEPS



End holes for side mount.

Middle holes for top mount.

Here are the variable angles, this photo shows the 15° selected.

- Place the both Cross Arm Channels on top of the Channel Arm Members at the appropriate hole (depending on solar panel size) and fix with the 4 x M8 x 30mm Socket Head Cap Screw and Nyloc Nuts and round washers. Tighten using 6mm Allen key and 13mm Socket (not included).



- Spanner 17mm
- Spanner 13mm
- Allen Key 6mm

INSTALLATION STEPS

8. Place solar panel on the cross arm members and secure at the top and bottom with the 6x Solar panel clamps provided, bolting through the arm members. Tighten using 6mm Allen key (not included).



Complete top mount install



Complete side mount install

NOTE:

Final adjustment, make sure all bolts are tight and the installation is level.
Never let the assembly slide down the pole.



QUALITY CERTIFIED
ISO 9001 : 2015



ENVIRONMENT CERTIFIED
ISO 14001 : 2015



SAFETY CERTIFIED
ISO 45001 : 2018

AUSTRALIA
1300 734 253
sales@valen.com.au
www.valen.com.au

NEW ZEALAND
0800 734 253
sales@valen.co.nz
www.valen.co.nz